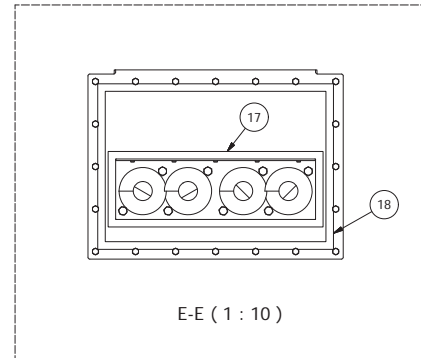
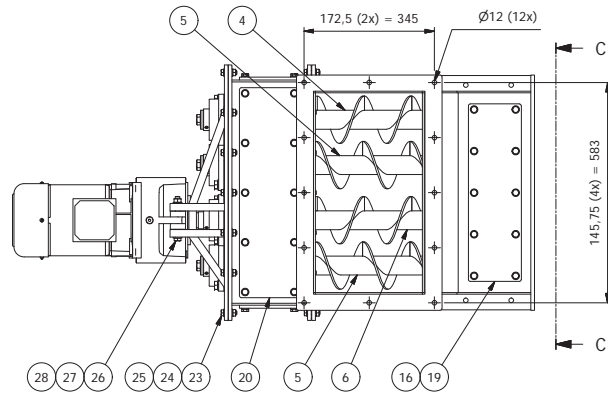
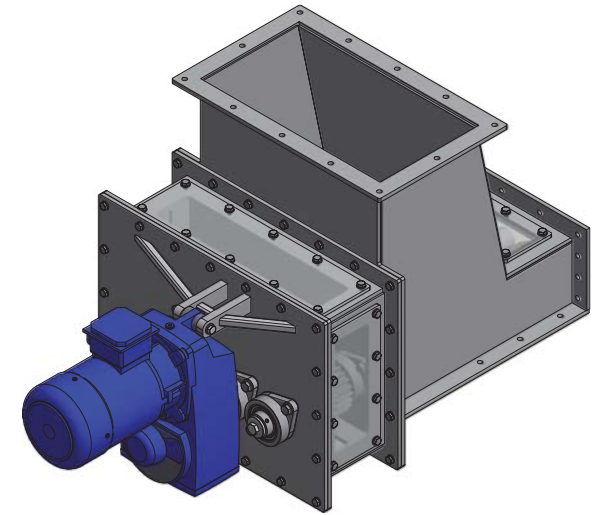
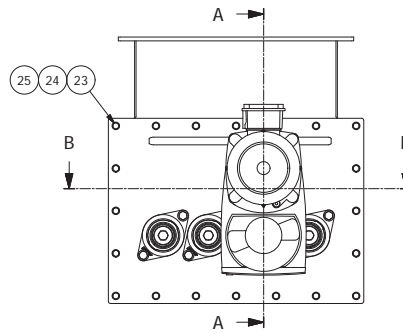
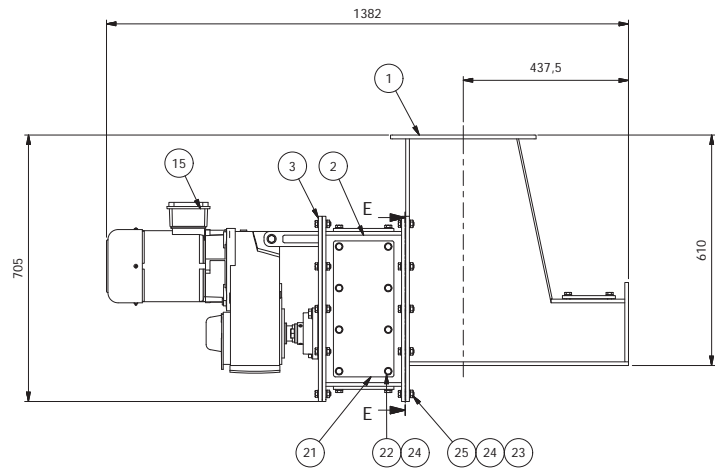


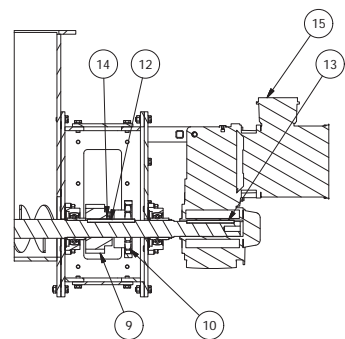
|    |     |                       |                         |        |  |          |        |
|----|-----|-----------------------|-------------------------|--------|--|----------|--------|
| 31 | 6   | Försänkt skruv        | MFS 10x75               |        |  | Fzv      | 0      |
| 30 | 64  | Bricka                | BRB 15x28x2,5           | 216650 |  | Fzv      | 0      |
| 29 | 32  | Sexkantskruv          | M6S 14x60 - 8.8         |        |  | Fzv      | 0,1    |
| 28 | 32  | Sexkantskruv          | M6S 14x40 - 8.8         |        |  | Fzv      | 0,1    |
| 27 | 32  | Bricka                | BRB 13x24x2,5 - 140 HV  | 216197 |  | Fzv      | 0      |
| 26 | 32  | Sexkantskruv          | M6S 12x35 - 8.8         |        |  | Fzv      | 0      |
| 25 | 143 | Bricka                | BRB 10,5x20x2 - 140 HV  | 216194 |  | Fzv      | 0      |
| 24 | 31  | Sexkantskruv          | M6S 10x50 - 8.8         |        |  | Fzv      | 0      |
| 23 | 48  | Sexkantskruv          | M6S 10x45 - 8.8         | 216192 |  | Fzv      | 0      |
| 22 | 16  | Sexkantskruv          | M6S 10x35 - 8.8         | 216190 |  | Fzv      | 0      |
| 21 | 48  | Sexkantskruv          | M6S 10x20 - 8.8         |        |  | Fzv      | 0      |
| 20 | 8   | Sexkantskruv          | M6S 8x20 - 8.8          | 216208 |  | Fzv      | 0      |
| 19 | 8   | Bricka                | BRB 6,4x12x1,6 - 140 HV | 216588 |  | Fzb      | 0      |
| 18 | 8   | Sexkantskruv          | M6S 6x16 - 8.8          |        |  | Fzv      | 0      |
| 17 | 1   | Kilremskiva           | Ø224                    |        |  | ---      | 0      |
| 16 | 1   | Kilremskiva           | Ø200                    |        |  | ---      | 0      |
| 15 | 1   | Kilremskiva           | Ø180                    |        |  | ---      | 0      |
| 14 | 1   | Kilremskiva           | Ø170                    |        |  | ---      | 0      |
| 13 | 8   | Temperaturgivare      | PT100                   |        |  |          |        |
| 12 | 4   | Skyddskåpa            | 1068032                 |        |  | 1.4301   | 2,8    |
| 11 | 4   | Fäste induktiv givare | 1068029                 |        |  | 1.4301   | 0,8    |
| 10 | 4   | Induktiv givare       | NI8-M12-AP6X-H1141      |        |  | ---      | 0      |
| 9  | 8   | Lagerplatta           | 1065508                 |        |  | S355J2+N | 8,9    |
| 8  | 8   | Lager                 | 2215 K hus FNL515B      |        |  | 1.4301   | 14,9   |
| 7  | 8   | Lås plåt              | 1065177                 |        |  |          | 10,3   |
| 6  | 8   | Smuts samlare         | 1065173                 |        |  |          | 2,6    |
| 5  | 4   | Klinga                | 1065512                 |        |  |          | 12,5   |
| 4  | 1   | Innanmäte             | 1063946                 |        |  |          | 265,8  |
| 3  | 1   | Dörr vänster sida     | 1063990                 |        |  |          | 41,1   |
| 2  | 1   | Dörr höger sida       | 1063969                 |        |  |          | 52,6   |
| 1  | 1   | Kvarnhus              | 1063984                 |        |  |          | 1163,5 |

| Pos  | Antal | Benämning | Ritning | Beteckning/dimension | Artikel nr | Längd   | Material | Vikt    |
|--|-------|-----------|---------|----------------------|------------|---------|----------|---------|
| *The document is the property of TOMAL. Reproduction or use is prohibited according to applicable law.                                     |       |           |         |                      |            |         |          |         |
| <b>TOMAL</b><br>METERING SYSTEMS<br>Tomal AB / S-15166 Veasbyväg / Sweden<br>Tel: +46 (0)304 72200 / Fax: +46 (0)304 73130<br>www.tomal.se |       |           |         |                      |            |         |          | 1894 kg |
| Kvarn  |       |           |         |                      |            | 1/1     |          |         |
| Klingkvarn 350-4-30  |       |           |         |                      |            | 1063988 |          | C       |
| ANNE   | STTE  | A2        | 1:15    | 2018-02-09           |            |         |          |         |

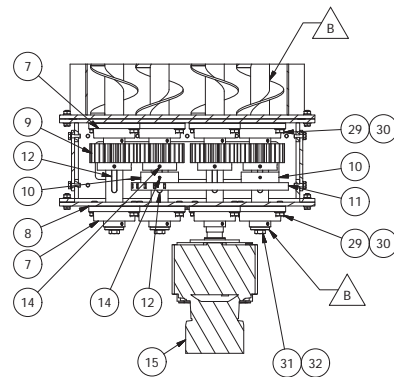
|     |                            |            |      |      |
|-----|----------------------------|------------|------|------|
| C   | Fästelement tillagt        | 2018-04-20 | MAIS | MAIS |
| B   | Givare + remskivor tillagt | 2018-04-18 | ANNE | MAIS |
| Rev | Ändring                    | Datum      | Inf  | Godk |



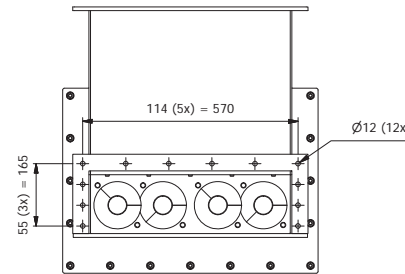
E-E (1 : 10)



A-A (1 : 10)



B-B (1 : 10)

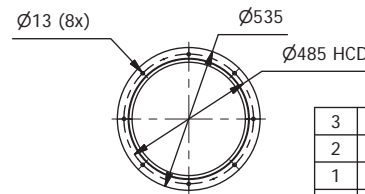
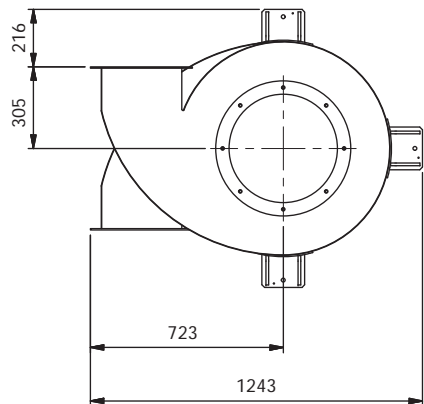
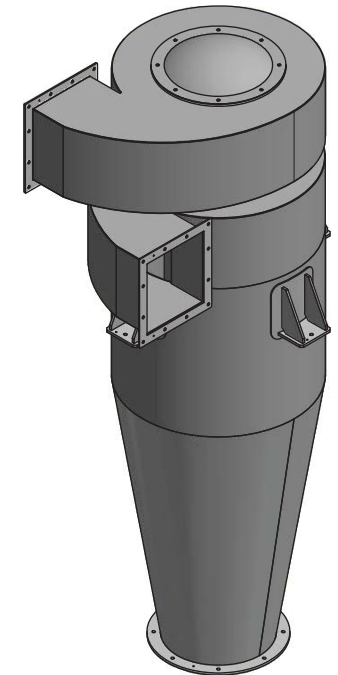
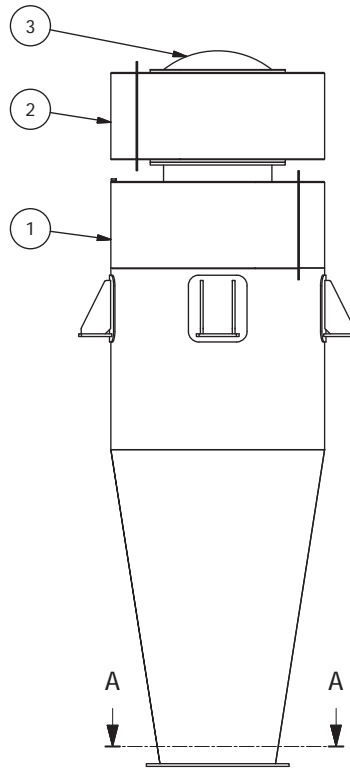
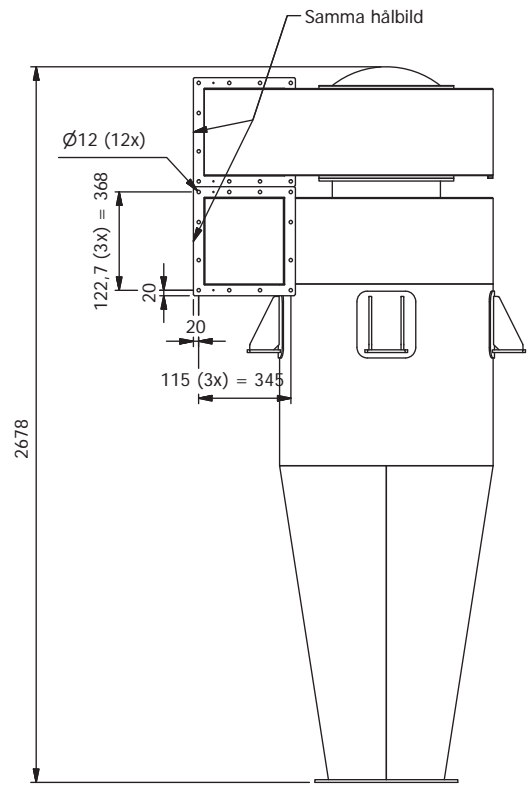


C (1 : 10)

|      |     |                             |         |                        |        |      |           |      |
|------|-----|-----------------------------|---------|------------------------|--------|------|-----------|------|
| 32   | 3   | Montagebricka               | 1018605 | D50/16                 | 215626 |      | 1.4404    | 0,1  |
| 31   | 3   | Sexkantskruv                |         | M6S 16x35 - 8.8        |        |      | Fzv       | 0,1  |
| 30   | 16  | Bricka                      |         | BRB 15x28x2,5          | 216650 |      | Fzv       | 0    |
| 29   | 16  | Sexkantskruv                |         | M6S 14x30 - 8.8        |        |      | Fzv       | 0,1  |
| 28   | 1   | Mutter                      |         | M6M 12 - 8             | 216198 |      | Fzv       | 0    |
| 27   | 2   | Bricka                      |         | BRB 13x24x2,5 - 140 HV | 216197 |      | Fzv       | 0    |
| 26   | 1   | Sexkantskruv                |         | M6S 12x110 - 8.8       |        |      | Fzv       | 0,1  |
| 25   | 35  | Mutter                      |         | M6M 10 - 8             | 216195 |      | Fzv       | 0    |
| 24   | 121 | Bricka                      |         | BRB 10,5x20x2 - 140 HV | 216194 |      | Fzv       | 0    |
| 23   | 35  | Sexkantskruv                |         | M6S 10x35 - 8.8        | 216190 |      | Fzv       | 0    |
| 22   | 51  | Sexkantskruv                |         | M6S 10x25 - 8.8        | 216189 |      | Fzv       | 0    |
| 21   | 2   | Inspektionsglas             | 1068108 |                        |        |      | PMMA XT   | 0,5  |
| 20   | 2   | Inspektionsglas             | 1068104 |                        |        |      | PMMA XT   | 0,8  |
| 19   | 1   | Inspektionsglas             | 1068183 |                        |        |      | PMMA XT   | 0,6  |
| 18   | 1   | Tättningslist               |         | 20x5                   | 212878 | 2164 | EPDM      | 0    |
| 17   | 1   | Tättningslist               |         | 20x5                   | 212878 | 1578 | EPDM      | 0    |
| 16   | 1   | Tättningslist               |         | 10x5                   | 212876 | 1120 | EPDM      | 0    |
| 15   | 1   | Tappvaxel                   |         | SK3282A B GH-100AH/4   |        |      | ---       | 61   |
| 14   | 6   | Stoppskruv                  |         | SK6S5 8x8              |        |      | Obeh.     | 0    |
| 13   | 1   | Plattkil                    |         | PK 12x8x125            |        |      | SS 212190 | 0,1  |
| 12   | 4   | Plattkil                    |         | PK 14x9x125            |        |      | SS 212190 | 0,1  |
| 11   | 1   | Rullkedja                   |         | S-1", ISO 16B1         | 212183 |      | ---       | 0,2  |
| W 10 | 2   | Kedjehjul                   |         | S-1" Z17 D45H7 K+S     | 212200 |      | C45       | 2,9  |
| W 9  | 4   | Kugghjul                    |         | m=5, z=24              |        |      | Steel     | 4,4  |
| S 8  | 8   | Packning                    | 1026652 | d45                    | 215010 |      | NBR       | 0    |
| S 7  | 8   | Lager                       |         | FYTB45TR               | 210094 |      | ---       | 1,8  |
| 6    | 1   | Doserskruv vänster drivande | 1067489 |                        |        |      |           | 16   |
| 5    | 2   | Doserskruv höger            | 1064343 |                        |        |      |           | 14,2 |
| 4    | 1   | Doserskruv vänster          | 1064341 |                        |        |      |           | 14,2 |
| 3    | 1   | Tappvaxelfäste              | 1067557 |                        |        |      |           | 27,3 |
| 2    | 1   | Gavelhus                    | 1064368 |                        |        |      |           | 50,1 |
| 1    | 1   | Doserhus                    | 1064345 |                        |        |      |           | 94,9 |

| S/W  | Pos | Antal | Benämning | Ritning | Beteckning/dimension | Artikel nr     | Langd        | Material | Vikt |
|--|-----|-------|-----------|---------|----------------------|----------------|--------------|----------|------|
| <p>This drawing contains the property of Tomal AB. Unauthorized use is prohibited according to applicable law.</p> <p><b>TOMAL</b> METERING SYSTEMS<br/>           Tomal AB   S-311 165 Vovöglåben / Sweden<br/>           Tel: +46 (0)346 713100 / Fax: +46 (0)346 713139<br/>           www.tomal.se</p> |     |       |           |         |                      |                |              |          |      |
| <p>Sammanställningsritning<br/>           Dosere - Kvarn<br/>           Dosere (inmatning) 2</p>   |     |       |           |         |                      | <p>339 kg</p>  | <p>1 / 1</p> |          |      |
| <p>2018-04-09</p>  |     |       |           |         |                      | <p>1064348</p> |              | <p>B</p> |      |

| Rev | Andring                                | Datum      | MAIS | MAIS |
|-----|--|------------|------|------|
| B   | Doserskrivar reviderade. Bricka utbytt | 2018-05-02 | MAIS | MAIS |



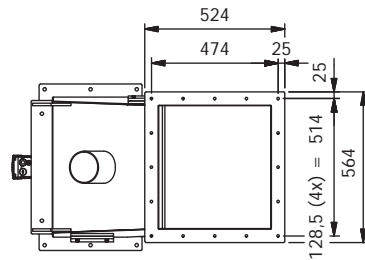
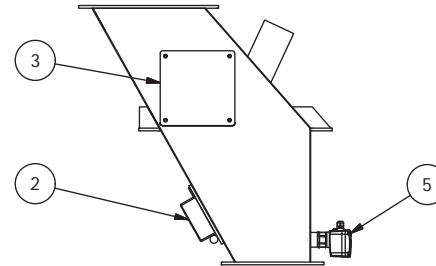
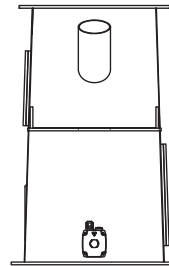
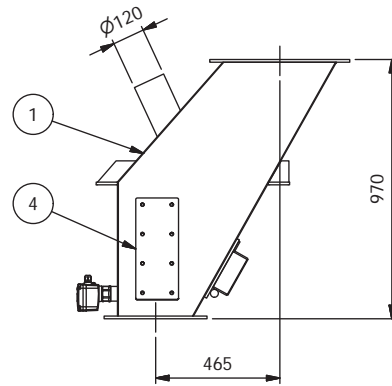
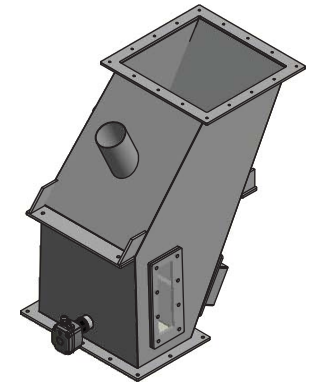
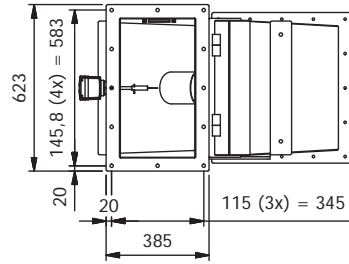
A-A ( 1:20 )

| Pos | Antal | Benämning             | Ritning | Beteckning/dimension | Artikel nr | Längd | Material | Vikt  |
|-----|-------|-----------------------|---------|----------------------|------------|-------|----------|-------|
| 3   | 1     | Explosionslucka       |         |                      |            |       | S355J2+N | 0,2   |
| 2   | 1     | Cyklonfilter överdel  |         |                      |            |       |          | 60    |
| 1   | 1     | Cyklonfilter underdel |         |                      |            |       |          | 193,3 |

This drawing remains the property of Tomal AB. Unauthorized use is prohibited according to applicable law.

|  |  |         |       |          |            |            |            |          |
|--|--|---------|-------|----------|------------|------------|------------|----------|
| <b>ProMinent</b><br>Group<br><b>TOMAL</b><br>METERING SYSTEMS<br>Tomal AB / S-31165 Vessigebro / Sweden<br>Tel: +46 (0)346 713100 / Fax: +46 (0)346 713139<br>www.tomal.se | <b>Cyklonfilter</b><br><b>Cyclon 800</b> |         | Vikt  | 254 kg   |            |            |            |          |
|  |  |         | Blad  | 1 / 1    |            |            |            |          |
| Ritad  | Godkänd                                  | Storlek | Skala | Ersätter | Datum      | Artikel nr | Ritningsnr | Revision |
| ANNE   | STTE                                     | A3      | 1:20  |          | 2018-03-01 |            | 1065283    | B        |

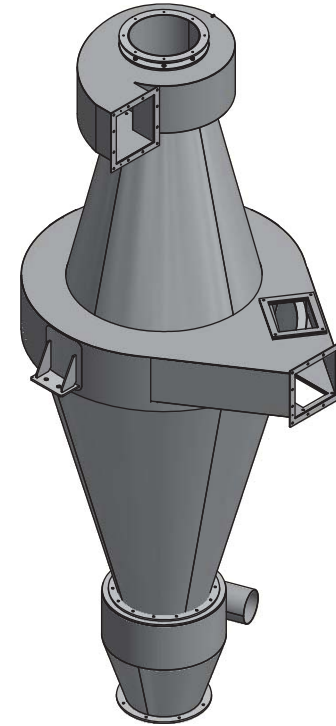
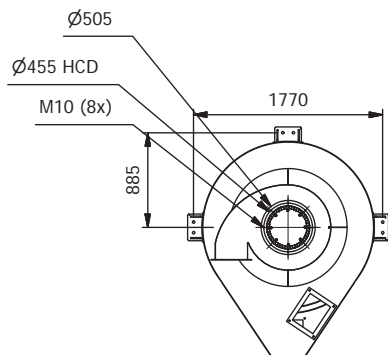
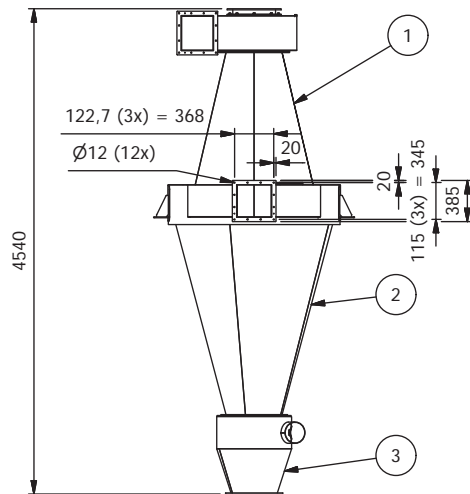
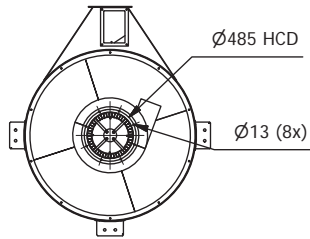
| Rev | Ändring | Datum | Inf | Godk |
|-----|---------|-------|-----|------|
|     |         |       |     |      |



| Pos  | Antal | Benämning               | Ritning | Beteckning/dimension   | Artikel nr | Längd | Material | Vikt |
|--|-------|-------------------------|---------|------------------------|------------|-------|----------|------|
| 5  | 1     | Nivåvakt, tom/valv nivå | 1061296 | RN4001 ATEX - G 1 1/2" | 217711     |       |          | 0,9  |
| 4  | 1     | Plåt                    | 1064421 |                        |            |       | PMMA XT  | 0,7  |
| 3  | 1     | Blindlock               | 1064420 |                        |            |       | PMMA XT  | 0,9  |
| 2  | 1     | Magnethållare           | 1064426 |                        |            |       |          | 5,7  |
| 1  | 1     | Magnetavskiljare        | 1064427 |                        |            |       |          | 78,7 |
| This drawing remains the property of Tomal AB. Unauthorized use is prohibited according to applicable law. |       |                         |         |                        |            |       |          |      |

|   |         |         |        |   |            |            |          |
|---|---------|---------|--------|---|------------|------------|----------|
|   |         |         |        | <b>Magnetavskiljare</b><br><b>Sammanställningsritning</b> |            | Vikt       | N/A      |
| Tomal AB / S-31165 Vessigebro / Sweden<br>Tel: +46 (0)346 713100 / Fax: +46 (0)346 713139<br>www.tomal.se |         |         |        |   |            | Blad       | 1 / 1    |
| Ritad   | Godkänd | Storlek | Skala  | Ersätter  | Datum      | Artikel nr | Revision |
| ANNE  | ANNE    | A3      | 1 : 20 |   | 2018-03-14 |            |          |
|   |         |         |        |   |            | Ritningsnr | 1067388  |
|   |         |         |        |   |            |            | B        |

|     |   |            |      |      |
|-----|---|------------|------|------|
| B   | Anslutningsrör kortat, nivåvakt tillagt | 2018-04-20 | MAIS | MAIS |
| Rev | Ändring                                 | Datum      | Inf  | Godk |

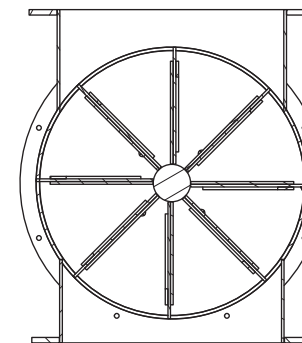
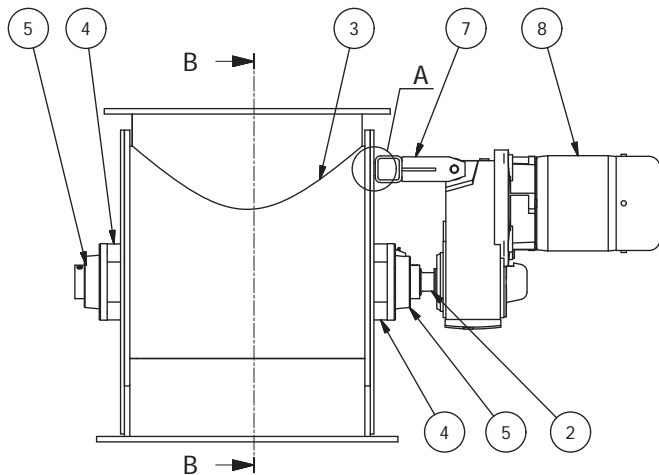
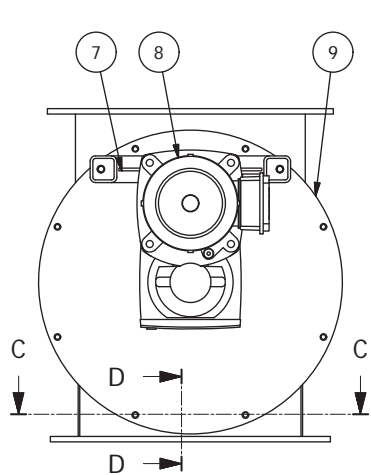


| 3   | 1     | Undre cyklon                  | 1067070 |                      |            |       |          | 54,1  |
|-----|-------|-------------------------------|---------|----------------------|------------|-------|----------|-------|
| 2   | 1     | Kona, nedre                   | 1067048 |                      |            |       |          | 158,3 |
| 1   | 1     | Övre halva, vriden 180 grader | 1069091 |                      |            |       |          | 433,2 |
| Pos | Antal | Benämning                     | Ritning | Beteckning/dimension | Artikel nr | Längd | Material | Vikt  |

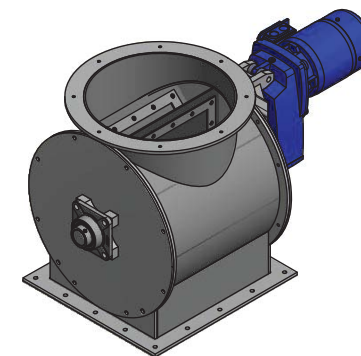
This drawing remains the property of Tomal AB. Unauthorized use is prohibited according to applicable law.

|  |  |         |        |          |            |            |            |          |
|--|--|---------|--------|----------|------------|------------|------------|----------|
| <b>ProMinent</b><br>Group<br><b>TOMAL</b><br>METERING SYSTEMS<br>Tomal AB / S-31165 Vessigebro / Sweden<br>Tel: +46 (0)346 713100 / Fax: +46 (0)346 713139<br>www.tomal.se | <b>Vindsikt</b><br><b>Clasificator full assembly</b> |         |        | Vikt     | N/A        |            |            |          |
|  |  |         |        | Blad     | 1 / 1      |            |            |          |
| Ritad  | Godkänd  | Storlek | Skala  | Ersätter | Datum      | Artikel nr | Ritningsnr | Revision |
| ANNE   |  | A3      | 1 : 50 |          | 2018-03-13 |            | 1069092    | A        |

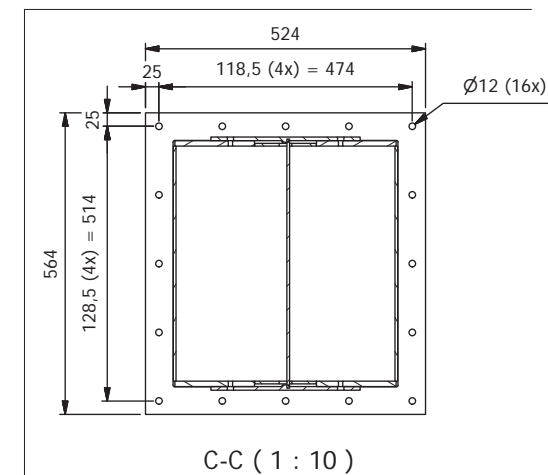
| Rev | Ändring | Datum | Inf | Godk |
|-----|---------|-------|-----|------|
|-----|---------|-------|-----|------|



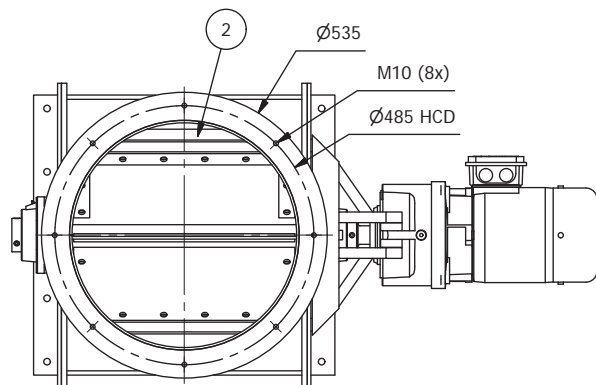
När axeln monteras så se till att gummiflärarna ligger åt rätt håll. De ska släpa efter när axeln roterar.



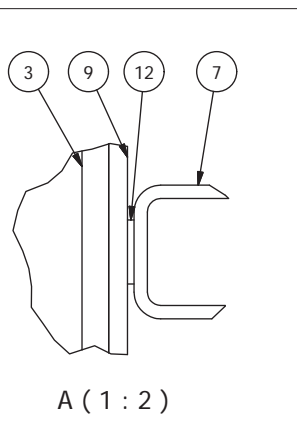
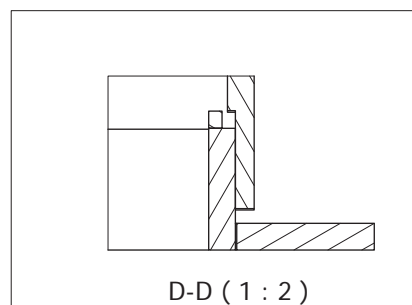
B-B (1 : 10)



C-C (1 : 10)



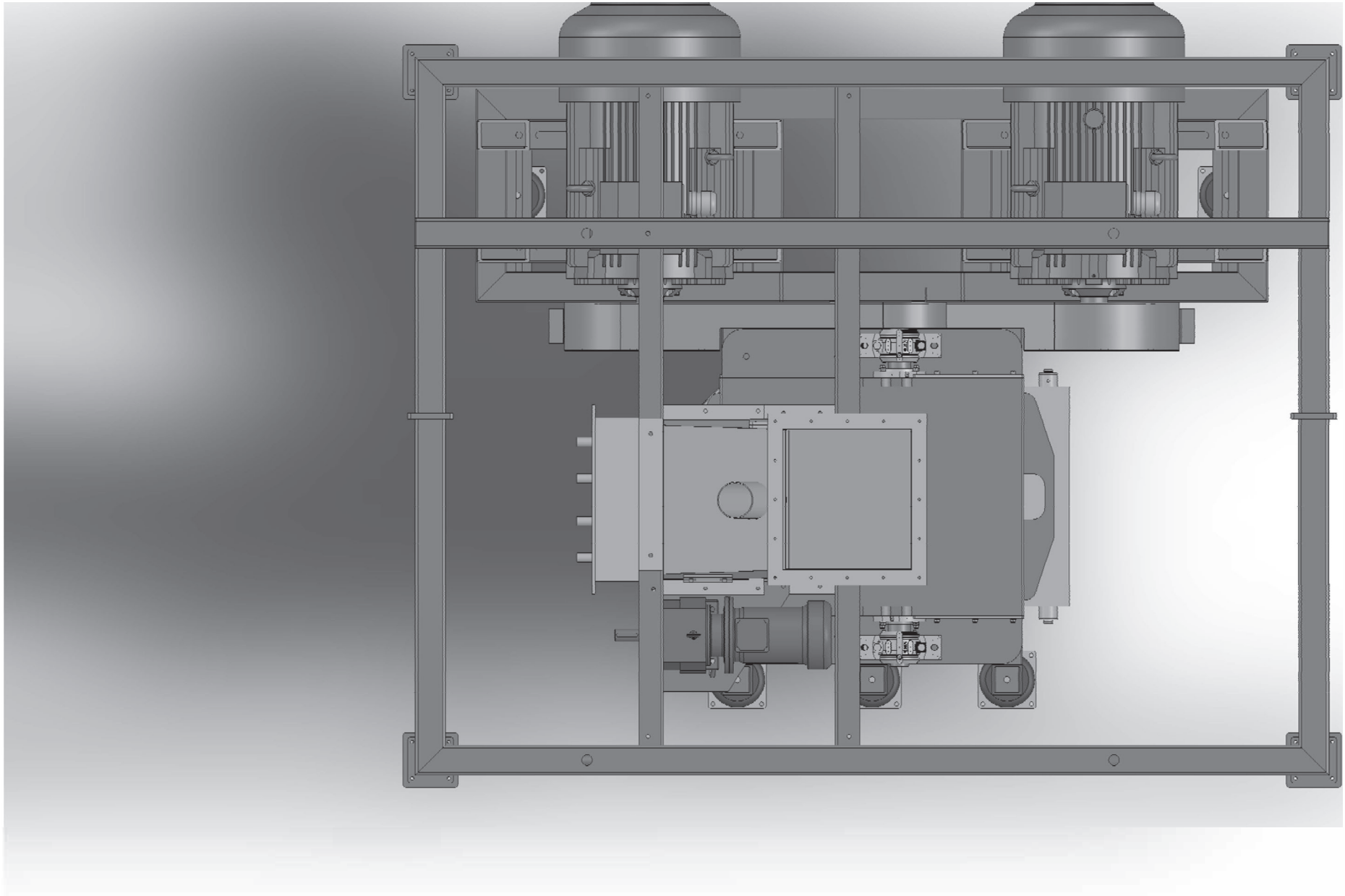
D-D (1 : 2)

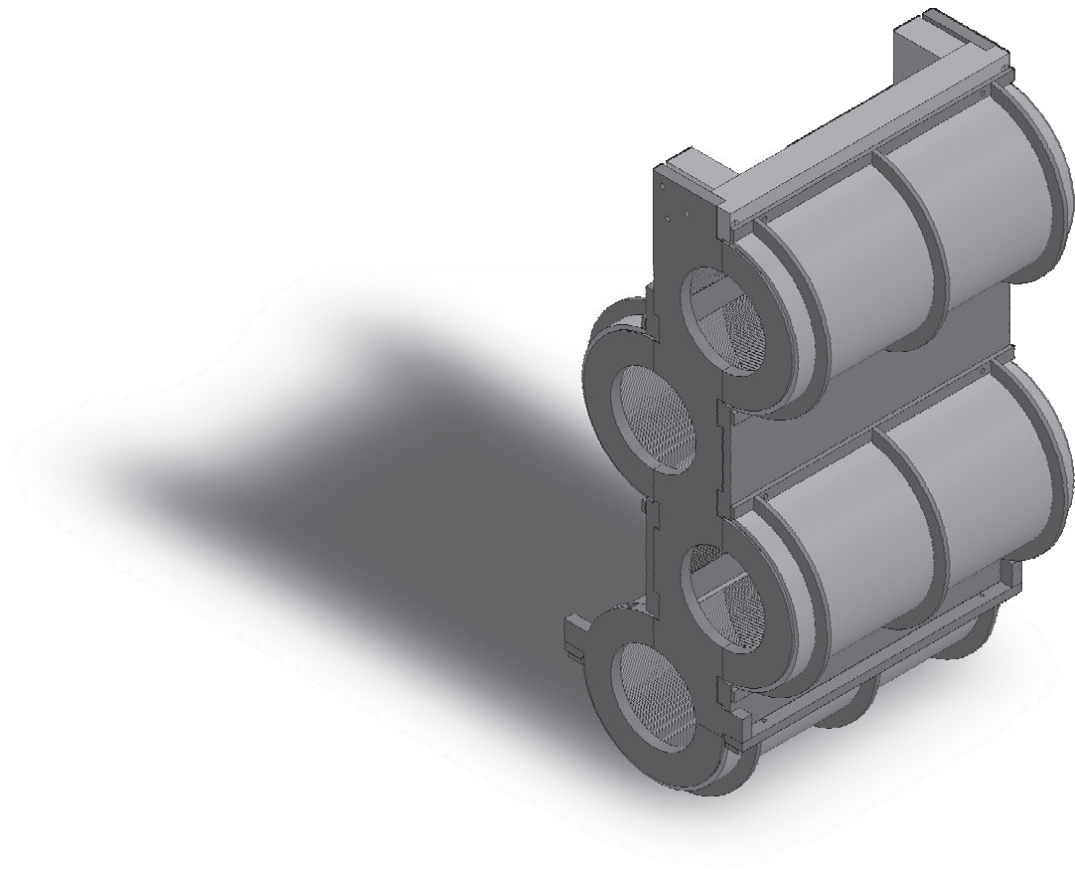


|     |       |                 |         |                        |            |       |          |      |
|-----|-------|-----------------|---------|------------------------|------------|-------|----------|------|
| 12  | 2     | Bricka          |         | BRB 13x24x2,5 - 140 HV | 216197     |       | Fzv      | 0    |
| 9   | 2     | Gavelplåt       | 1063949 |                        |            |       | S355J2H  | 18,2 |
| 8   | 1     | Tappväxel       | 1067252 | SK2282ABGH-90SP/4 TF   |            |       | ---      | 30   |
| 7   | 1     | Momentstag      | 1066871 |                        |            |       |          | 3,9  |
| 5   | 2     | Lager           |         | FY50TR                 | 210102     |       | ---      | 0    |
| 4   | 2     | Tätningplåt     | 1063959 |                        |            |       | S355J2H  | 2,1  |
| 3   | 1     | Cellmatarhus    | 1064013 |                        |            |       |          | 53,4 |
| 2   | 1     | Cellmatarvingar | 1067280 |                        |            |       |          | 80,5 |
| Pos | Antal | Benämning       | Ritning | Beteckning/dimension   | Artikel nr | Längd | Material | Vikt |

|   |         |         |        |          |            |            |  |            |         |
|---|---------|---------|--------|----------|------------|------------|--|------------|---------|
| This drawing remains the property of Tomal AB. Unauthorized use is prohibited according to applicable law.  |         |         |        |          |            |            |  | Vikt       | 208 kg  |
| <b>ProMinent</b> Group<br><b>TOMAL</b><br>METERING SYSTEMS<br>Tomal AB / S-31165 Vessigebro / Sweden<br>Tel: +46 (0)346 713100 / Fax: +46 (0)346 713139<br>www.tomal.se |         |         |        |          |            |            |  | Blad       | 1 / 1   |
| Cellmatare  |         |         |        |          |            |            |  | Ritningsnr | 1064065 |
| Ritad   | Godkänd | Storlek | Skala  | Ersätter | Datum      | Artikel nr |  | Revision   |         |
| MISY  | ANNE    | A3      | 1 : 10 |          | 2018-03-12 |            |  | B          |         |

|     |            |            |      |      |
|-----|------------|------------|------|------|
| B   | Uppdaterad | 2018-03-13 | ANNE | ANNE |
| Rev | Ändring    | Datum      | Inf  | Godk |







Closing weld  
assembly  
8pcs

Right door  
1pc

Duster  
8pcs

Blade assembly  
4pcs

Intake assembly  
1pc

Part41

Left door  
1pc

SIA "PELETS"

2014.08.26. 23:58:02

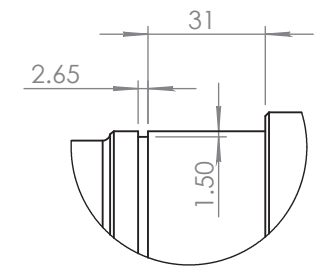
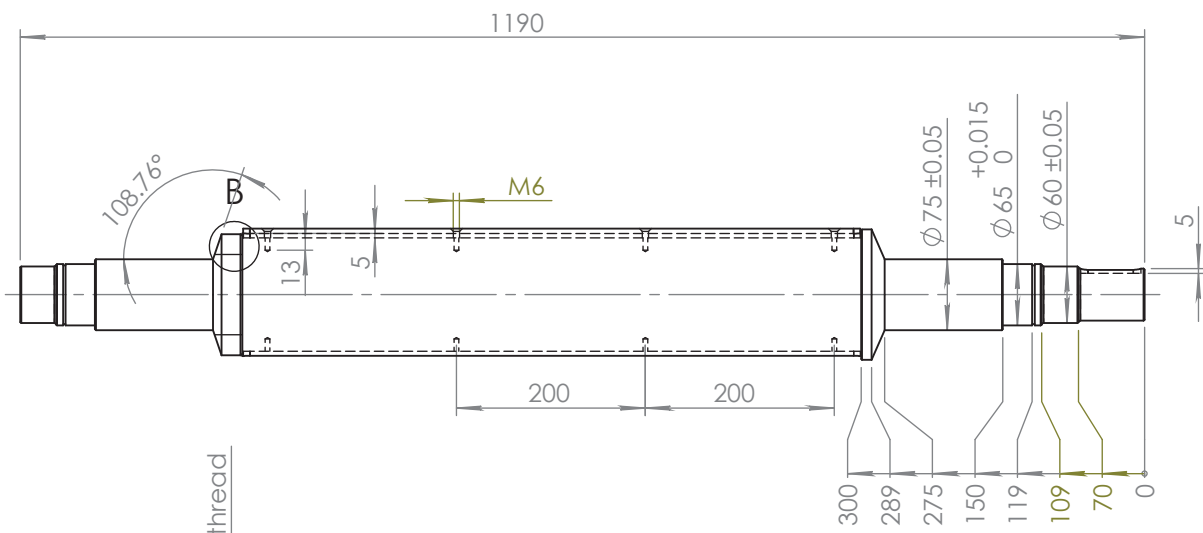
DWG NO.

Klingkvarn 350-4-30

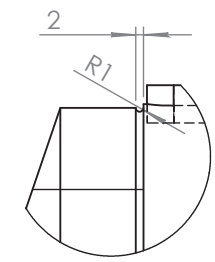
A4

SCALE:1:1

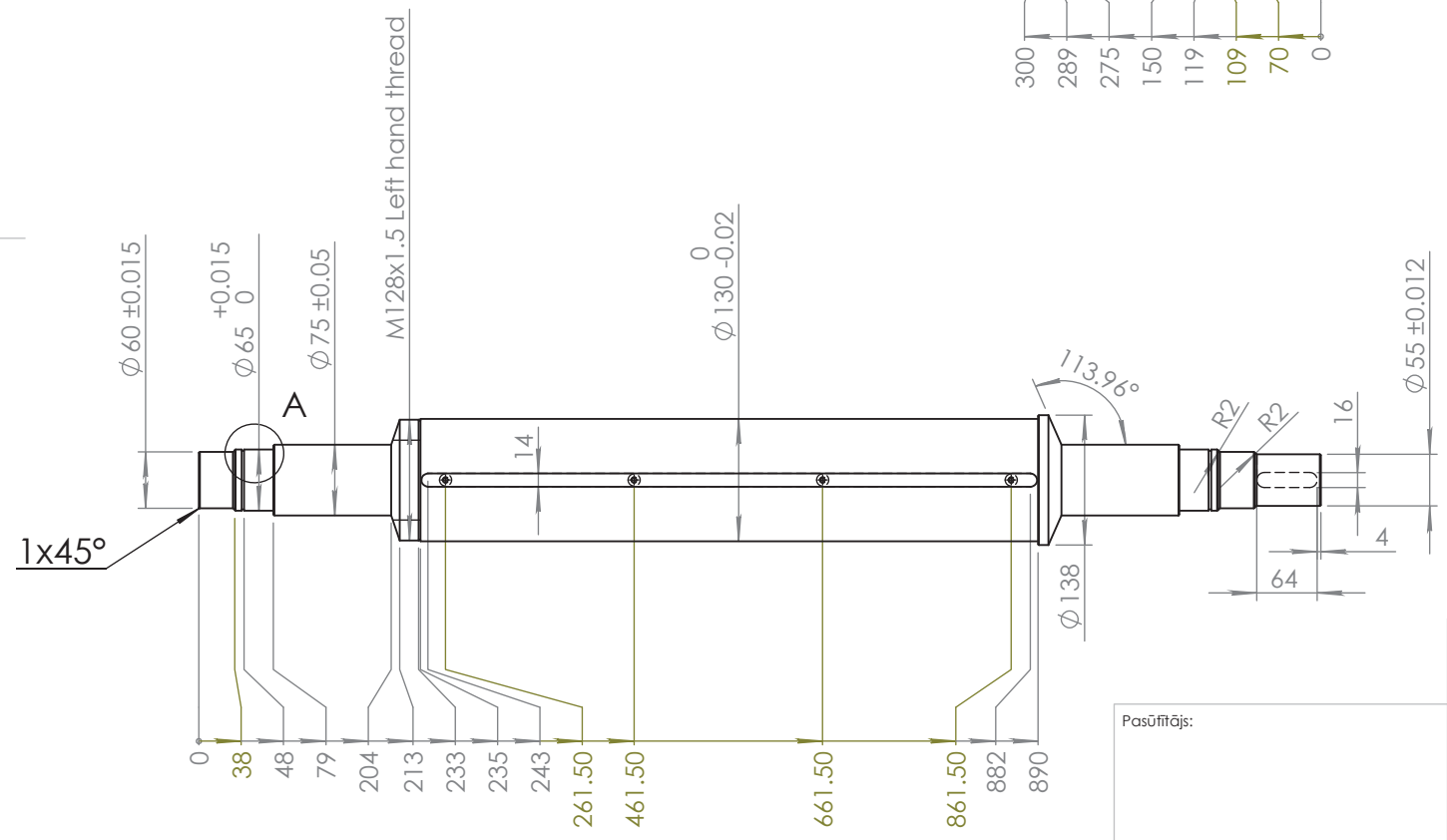
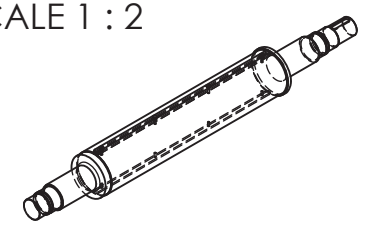
SHEET 1 OF 1



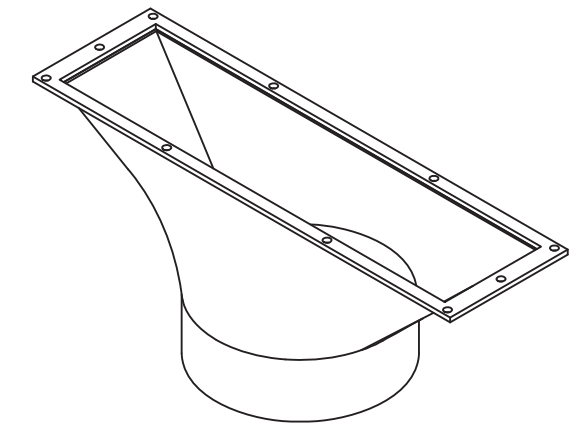
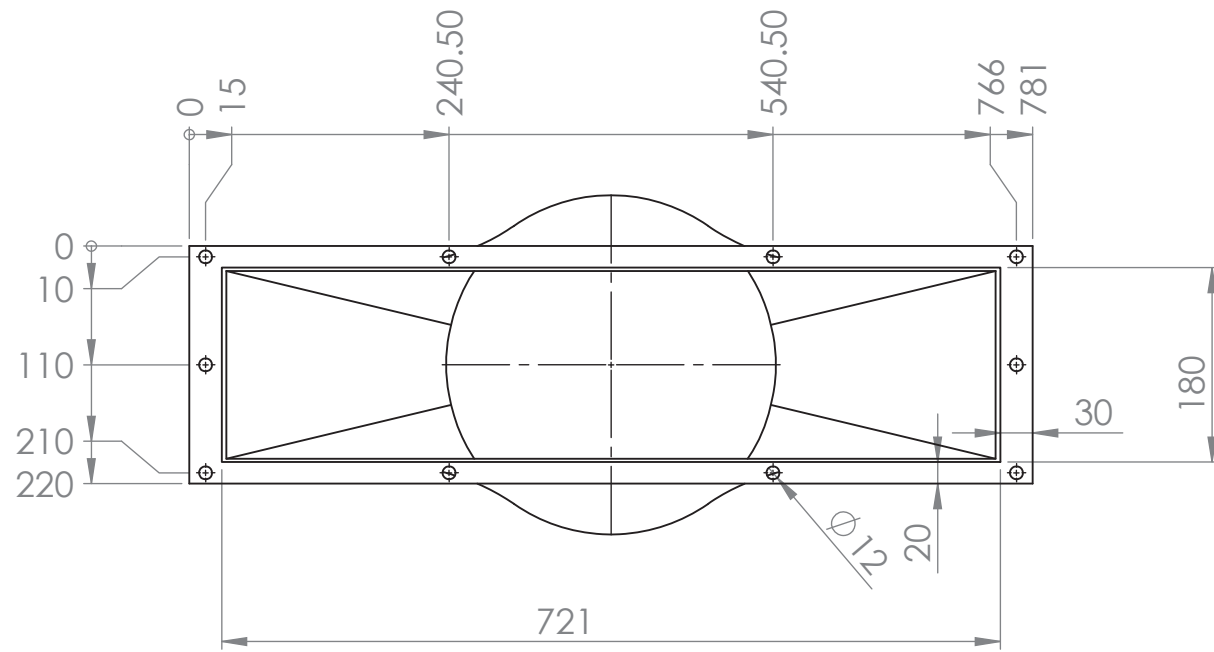
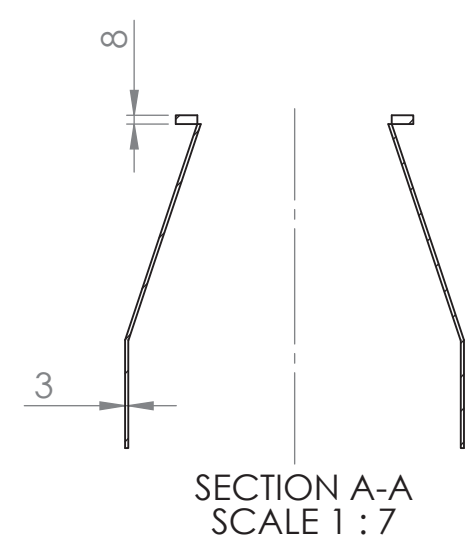
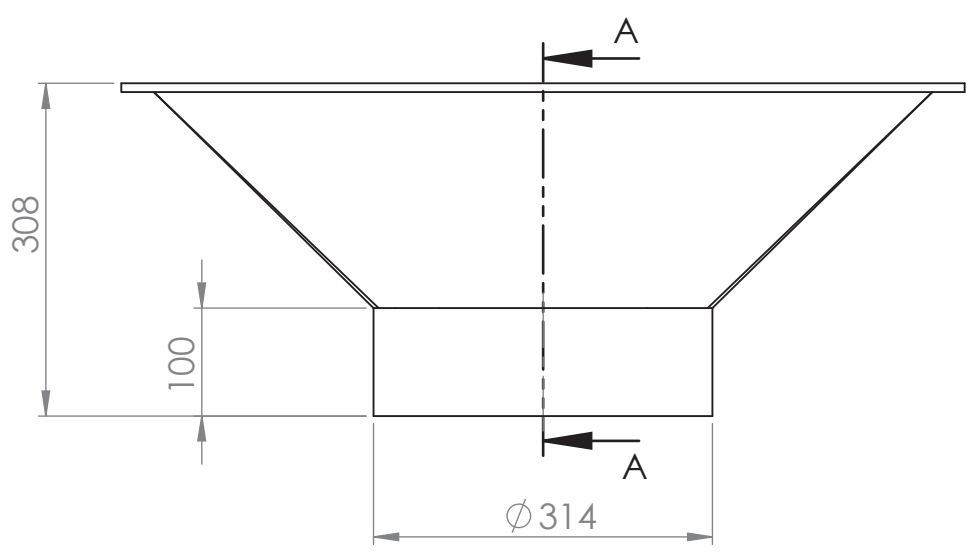
DETAIL A  
SCALE 1 : 2



DETAIL B  
SCALE 1 : 2

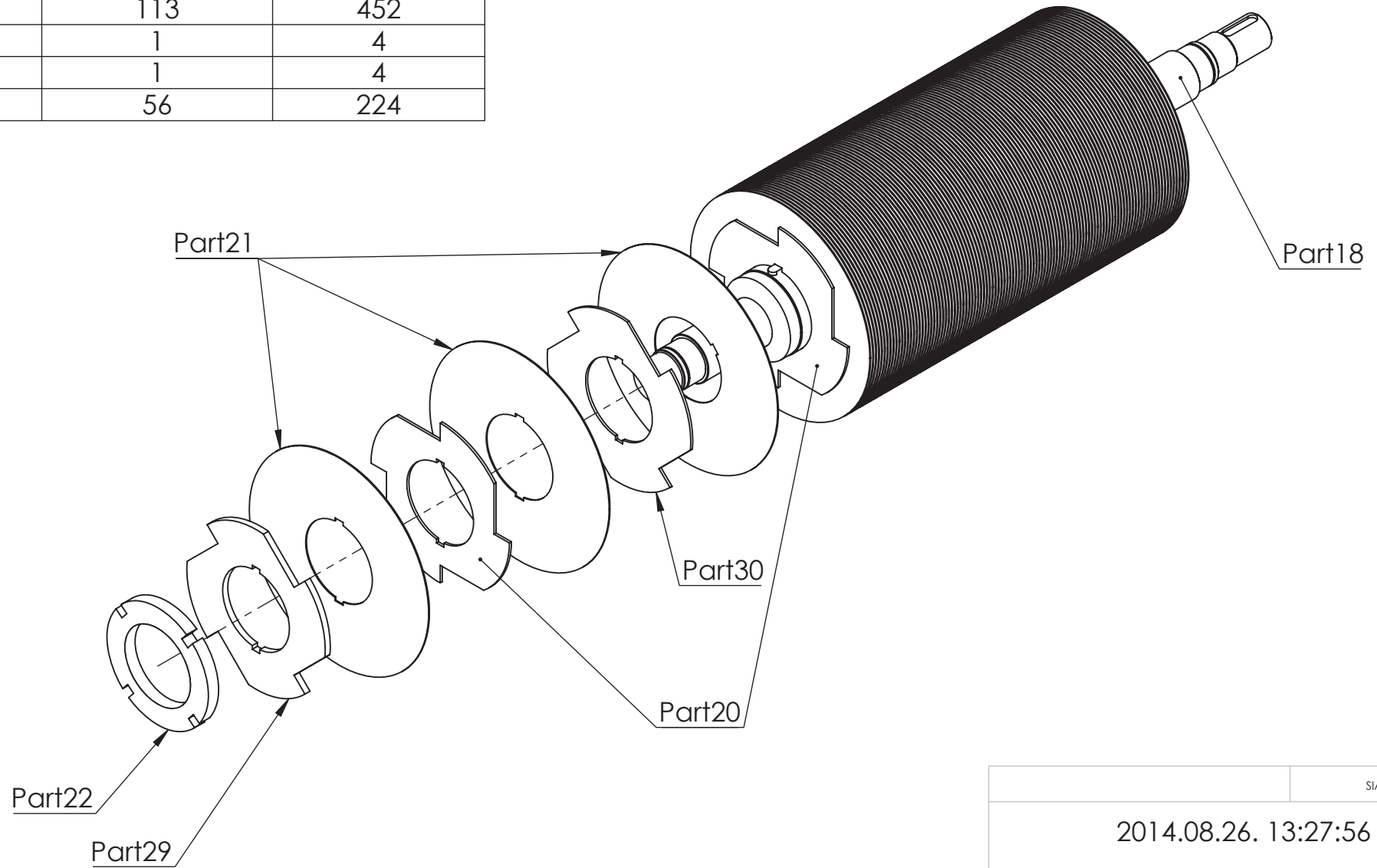


|                      |  |  |             |
|----------------------|--|--|-------------|
| 2014.08.27. 11:23:20 |  | <br>www.parkit.lv |             |
| Pasūtītājs:          |  | Detaļas nosaukums:<br><br><h1>Part18</h1>  |             |
| Materiāls:           |  | Kopsalikums:   | A4          |
| Svars: g             |  | Mērogs: 1:20   | Lapa 1 no 1 |

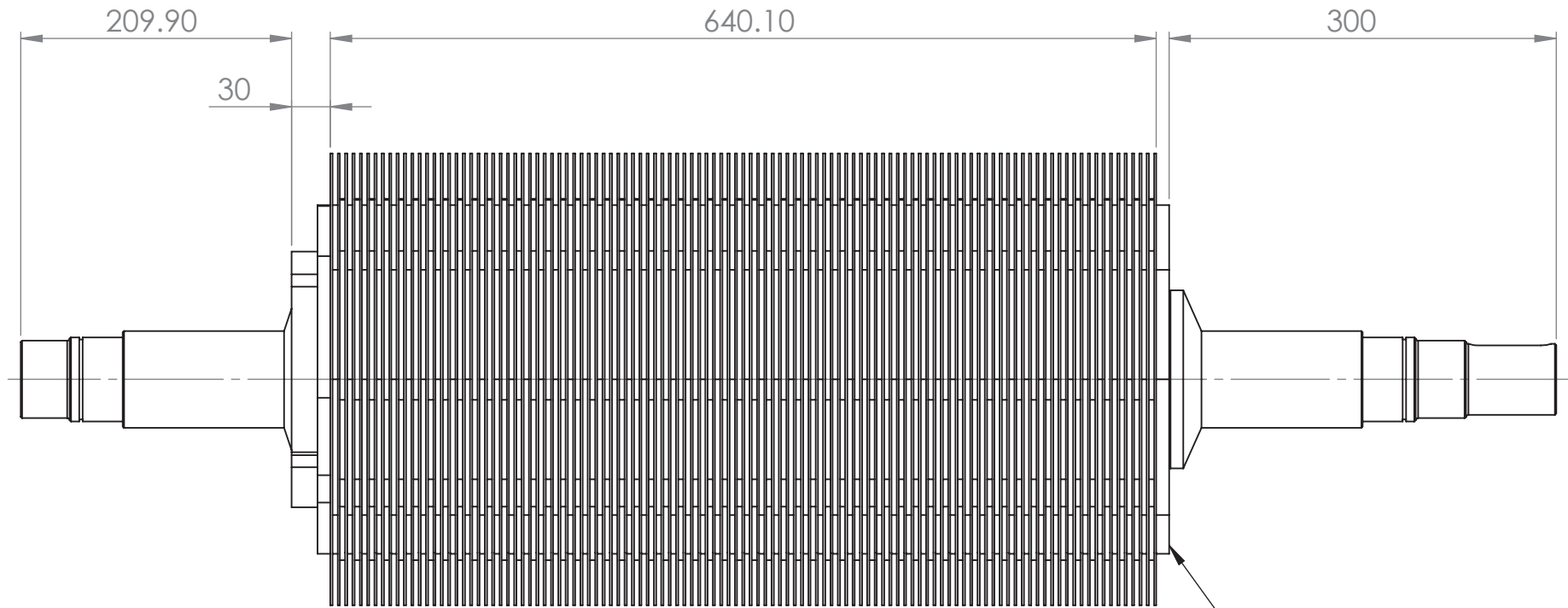


|                      |               |              |              |
|----------------------|---------------|--------------|--------------|
|                      |               | SIA "PELETS" |              |
| 2014.08.21. 16:20:25 |               |              |              |
| DWG NO.              | <b>Part41</b> |              | A4           |
| SCALE:1:10           |               |              | SHEET 1 OF 1 |

| Part name | Qty. in one blade assembly | Total qty. in Klingvarn |
|-----------|----------------------------|-------------------------|
| Part18    | 1                          | 4                       |
| Part19    | 1                          | 4                       |
| Part20    | 56                         | 224                     |
| Part21    | 113                        | 452                     |
| Part22    | 1                          | 4                       |
| Part29    | 1                          | 4                       |
| Part30    | 56                         | 224                     |

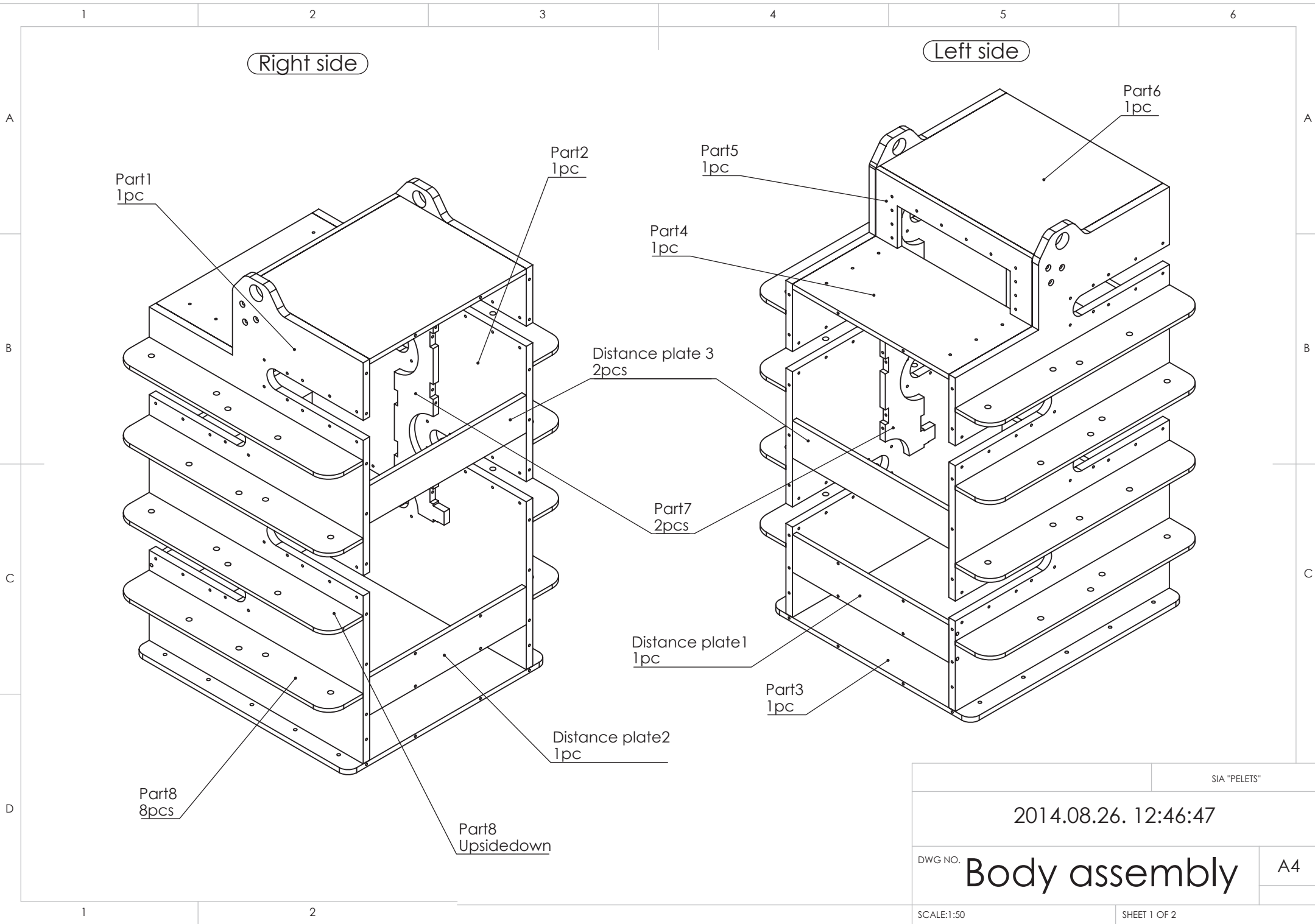


|                      |                       |
|----------------------|-----------------------|
| SIA "PELETS"         |                       |
| 2014.08.26. 13:27:56 |                       |
| DWG NO.              | <b>Blade assembly</b> |
|                      | A4                    |
| SCALE:1:1            | SHEET 1 OF 2          |



Part19

|                      |                       |              |    |
|----------------------|-----------------------|--------------|----|
|                      |                       | SIA "PELETS" |    |
| 2014.08.26. 13:27:56 |                       |              |    |
| DWG NO.              | <b>Blade assembly</b> |              | A4 |
| SCALE:1:1            | SHEET 2 OF 2          |              |    |



Right side

Left side

Part1  
1pc

Part2  
1pc

Part5  
1pc

Part6  
1pc

Part4  
1pc

Distance plate 3  
2pcs

Part7  
2pcs

Distance plate 1  
1pc

Part3  
1pc

Distance plate 2  
1pc

Part8  
8pcs

Part8  
Upsidedown

SIA "PELETS"

2014.08.26. 12:46:47

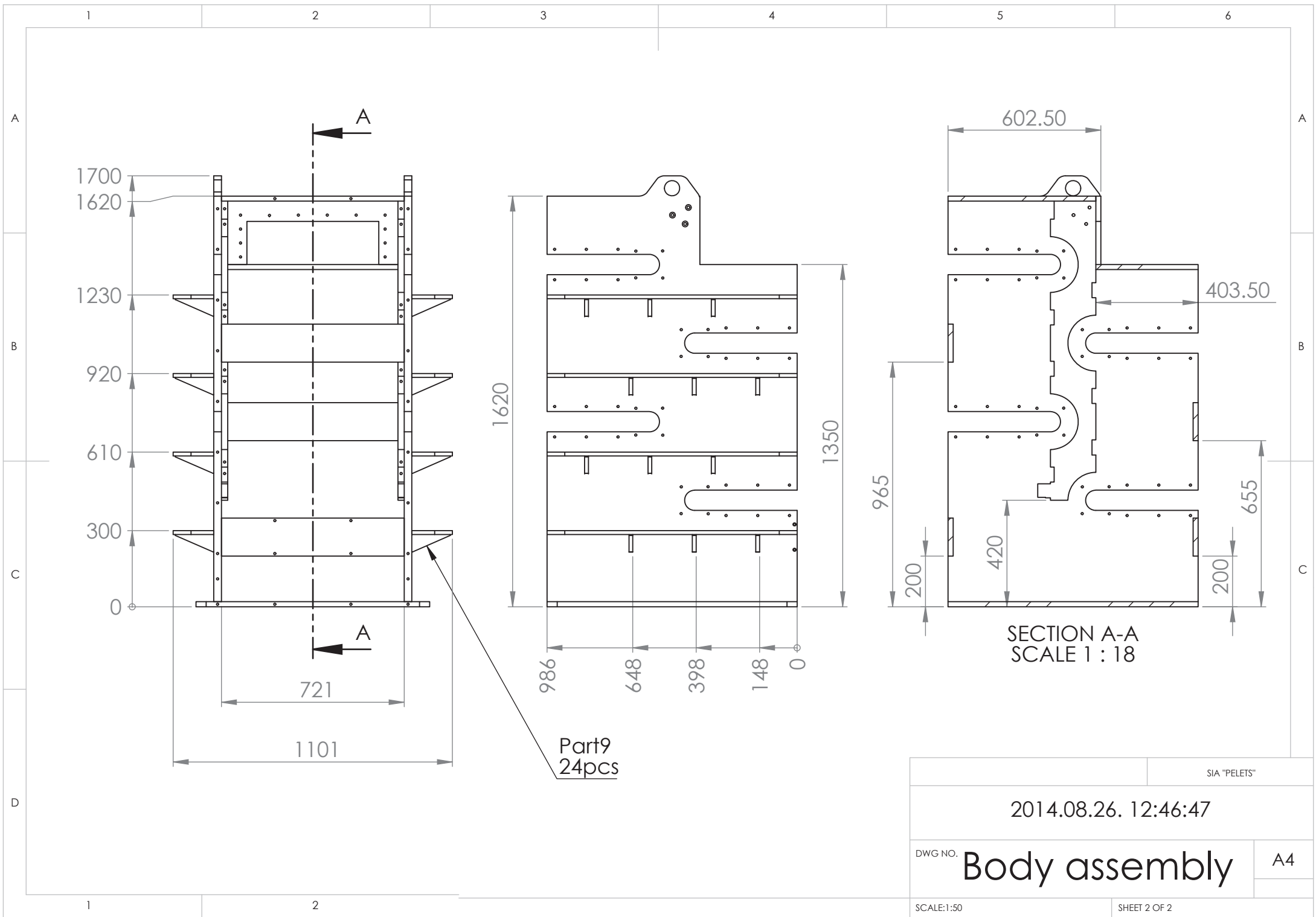
DWG NO.

Body assembly

A4

SCALE:1:50

SHEET 1 OF 2



1700  
1620  
1230  
920  
610  
300  
0

721  
1101

1620  
1350  
986  
648  
398  
148  
0

Part9  
24pcs

602.50  
403.50  
965  
420  
200  
655  
200

SECTION A-A  
SCALE 1 : 18

|                      |                      |              |    |
|----------------------|----------------------|--------------|----|
|                      |                      | SIA "PELETS" |    |
| 2014.08.26. 12:46:47 |                      |              |    |
| DWG NO.              | <b>Body assembly</b> |              | A4 |
| SCALE:1:50           | SHEET 2 OF 2         |              |    |